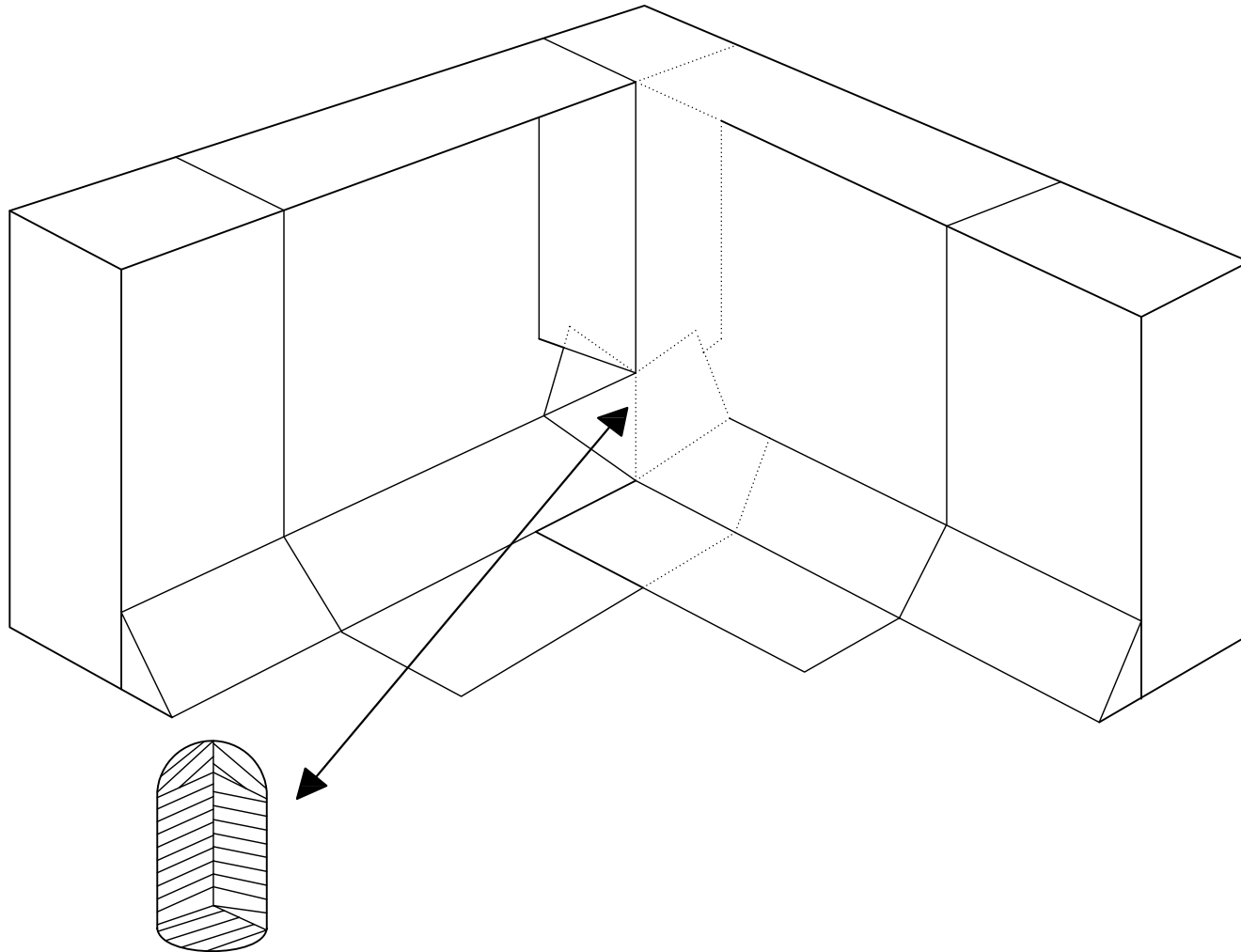


NOTES:

1. MAKE FIELD CUTS AT TOP AND BOTTOM OF CANT TO PROPERLY FOLD.
2. INSTALL SBS CORNER MEMBRANE FLASHING OVER CUTS MADE IN SBS MODIFIED BITUMEN FLASHING.
3. DURAFLEX ALUM MAY BE USED FOR FLASHING MATERIAL IN LIEU OF HOT ASPHALT APPLIED SBS FLASHING MEMBRANE. DURAFLEX ALUM MAY ONLY BE APPLIED WITH HOT ASPHALT OR USING THE HEAT WELDING METHOD OR PLYLINK FLASH-N-PATCH. DO NOT USE SOLVENT BASED ADHESIVES TO INSTALL DURAFLEX ALUM.
4. WHEN DURAFLEX ALUM IS USED FOR BASE FLASHING MATERIAL IN LIEU OF HOT ASPHALT APPLIED SBS BASE FLASHING, THE CORNERS SHALL BE MITERED. THE CORNERS SHALL BE OVERLAPPED AND CORNER PATCHED WITH SBS MEMBRANE PRIOR TO THE INSTALLATION OF THE DURAFLEX ALUM.



This detail is furnished "as is" and "as available" and for information only and as a guide for use in conjunction with U.S. Ply products with applicable construction conditions. All dimensions shown are sheet specific; do not scale off of drawing. All details must be checked by the user's designer, architect or engineer to ensure that design is adequate for intended use. Any alterations made to this detail become the design of the user and shall neither be assumed nor construed as U.S. Ply's design. U.S. Ply will not be liable for damages of any kind arising from the use of this website, and/or details, including direct, indirect, incidental, consequential and punitive damages.



U.S. PLY, INC.

Pioneered with performance in mind... Engineered to stand the test of time.

TITLE:

SBS INSIDE CORNER FLASHING DETAIL

DATE:
05-14-2004

SCALE:
N.T.S.

REVISIONS:
01-31-2011

DF-7