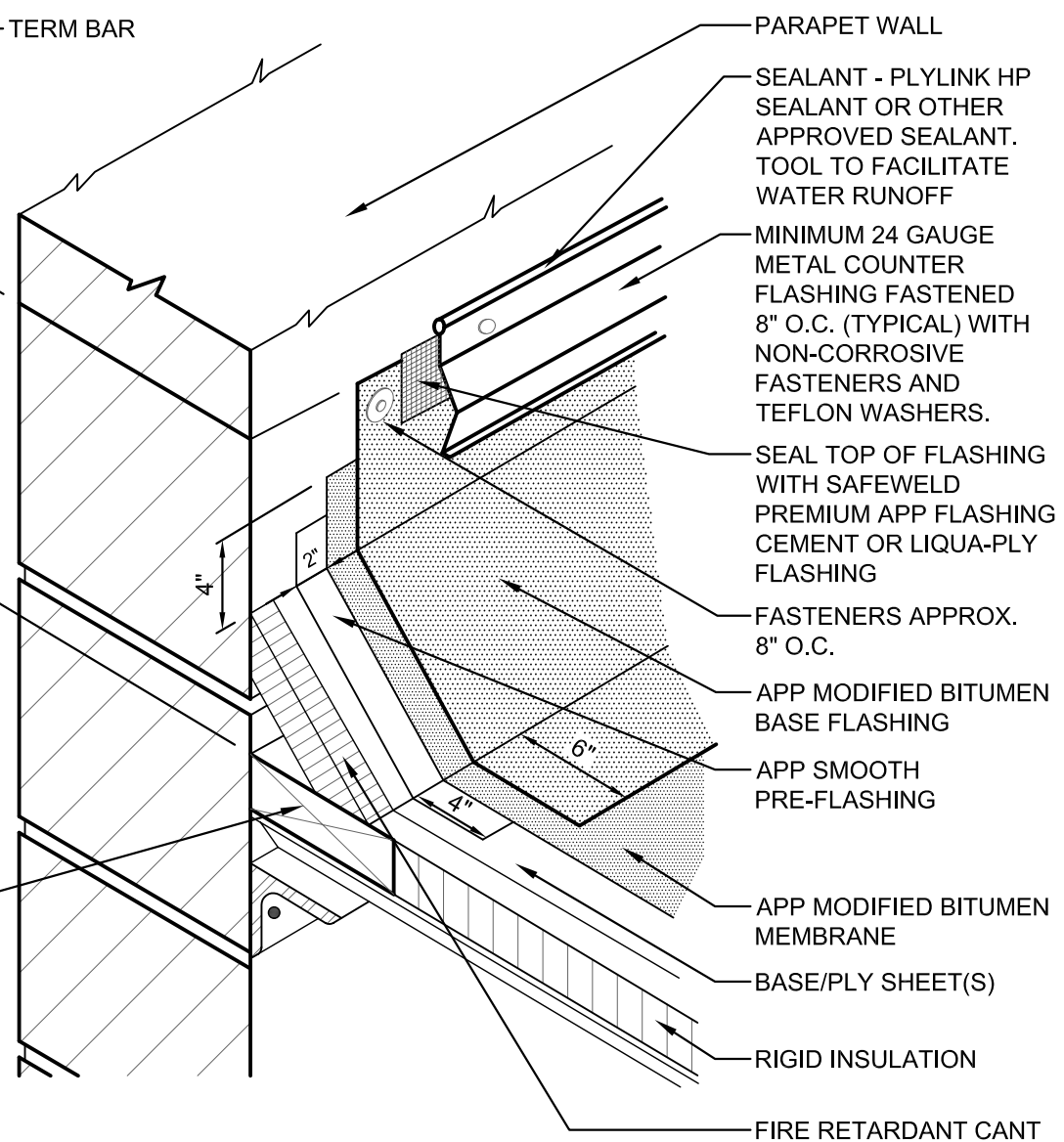


TERM BAR

8" MIN. FLASHING HEIGHT
24" MAX. FLASHING HEIGHT

WOOD NAILER
ATTACHED TO
SUBSTRATE - OVERALL
THICKNESS TO MATCH
INSULATION



PARAPET WALL
SEALANT - PLYLINK HP SEALANT OR OTHER APPROVED SEALANT. TOOL TO FACILITATE WATER RUNOFF
MINIMUM 24 GAUGE METAL COUNTER FLASHING FASTENED 8" O.C. (TYPICAL) WITH NON-CORROSIVE FASTENERS AND TEFLON WASHERS.
SEAL TOP OF FLASHING WITH SAFEWELD PREMIUM APP FLASHING CEMENT OR LIQUA-PLY FLASHING
FASTENERS APPROX. 8" O.C.
APP MODIFIED BITUMEN BASE FLASHING
APP SMOOTH PRE-FLASHING
APP MODIFIED BITUMEN MEMBRANE
BASE/PLY SHEET(S)
RIGID INSULATION
FIRE RETARDANT CANT

NOTES:

1. WHEN PARAPET WALL EXCEEDS 24" IN HEIGHT, REFER TO DURAWELD™ APP HIGH WALL FLASHING DETAIL.
2. MASONRY WALLS TO BE PRIMED PRIOR TO FLASHING. WOOD WALLS REQUIRE BASE SHEET NAILED TO WALL 8" O.C. ALONG TOP AND LAPS, ONE PER S.F. FIELD.
3. TERM BAR SHALL BE MINIMUM 1" WIDE EXTRUDED ALUMINUM, FASTENED 8" O.C. (TYPICAL) WITH NON-CORROSIVE FASTENERS AND TEFLON WASHERS.
4. TERM BAR, IN LIEU OF COUNTER FLASHING, IS NOT ACCEPTABLE FOR 15 AND 20 YEAR SYSTEMS.

This detail is furnished "as is" and "as available" and for information only and as a guide for use in conjunction with U.S. Ply products with applicable construction conditions. All dimensions shown are sheet specific; do not scale off of drawing. All details must be checked by the user's designer, architect or engineer to ensure that design is adequate for intended use. Any alterations made to this detail become the design of the user and shall neither be assumed nor construed as U.S. Ply's design. U.S. Ply will not be liable for damages of any kind arising from the use of this website, and/or details, including direct, indirect, incidental, consequential and punitive damages.



U.S. PLY, INC.

Pioneered with performance in mind... Engineered to stand the test of time.

TITLE:
APP COUNTER FLASHING DETAIL

DATE:
05-14-2004

SCALE:
N.T.S.

REVISIONS:
01-31-2011

DW-5