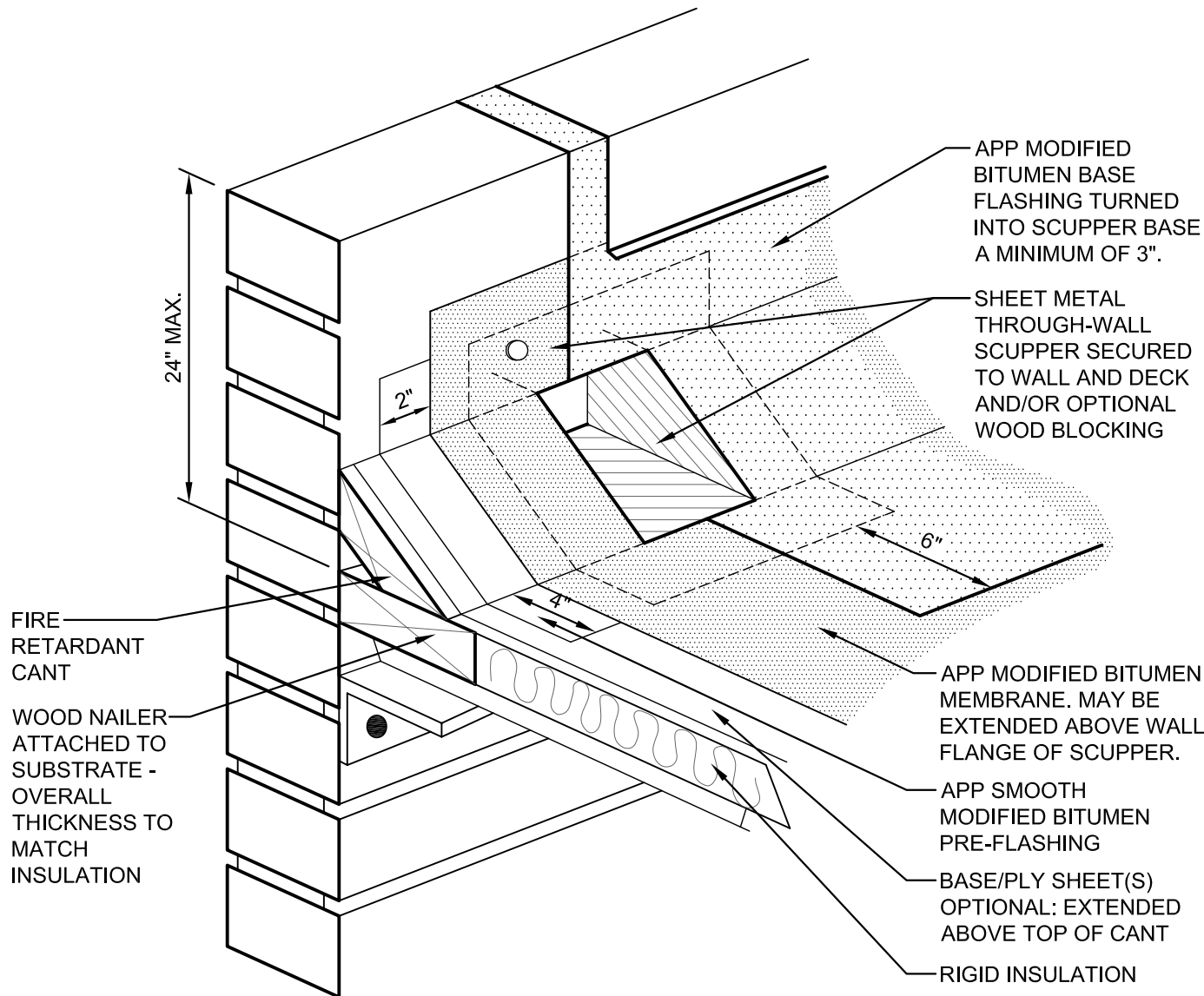


# NOTES:

1. SEE DURAWELD™ APP HIGH WALL FLASHING DETAIL FOR WALL FLASHING ABOVE 24".
2. SET SCUPPER FLANGES IN SAFEWELD PREMIUM APP FLASHING CEMENT - PRIME FLANGE BEFORE STRIPPING.
3. APPLY A BEAD OF SAFEWELD APP FLASHING CEMENT, LIQUA-PLY FLASHING OR PLYLINK CONSTRUCTION ADHESIVE/SEALANT TO THE MEMBRANE TERMINATION INSIDE SCUPPER AND AT SCUPPER OPENING CORNERS.



This detail is furnished "as is" and "as available" and for information only and as a guide for use in conjunction with U.S. Ply products with applicable construction conditions. All dimensions shown are sheet specific; do not scale off of drawing. All details must be checked by the user's designer, architect or engineer to ensure that design is adequate for intended use. Any alterations made to this detail become the design of the user and shall neither be assumed nor construed as U.S. Ply's design. U.S. Ply will not be liable for damages of any kind arising from the use of this website, and/or details, including direct, indirect, incidental, consequential and punitive damages.



# U.S. PLY, INC.

*Pioneered with performance in mind... Engineered to stand the test of time.*

TITLE:

**APP ROOF SCUPPER FLASHING DETAIL**

DATE:  
**05-14-2004**

REVISIONS:  
**01-31-2011**

SCALE:  
**N.T.S.**

**DW-16**