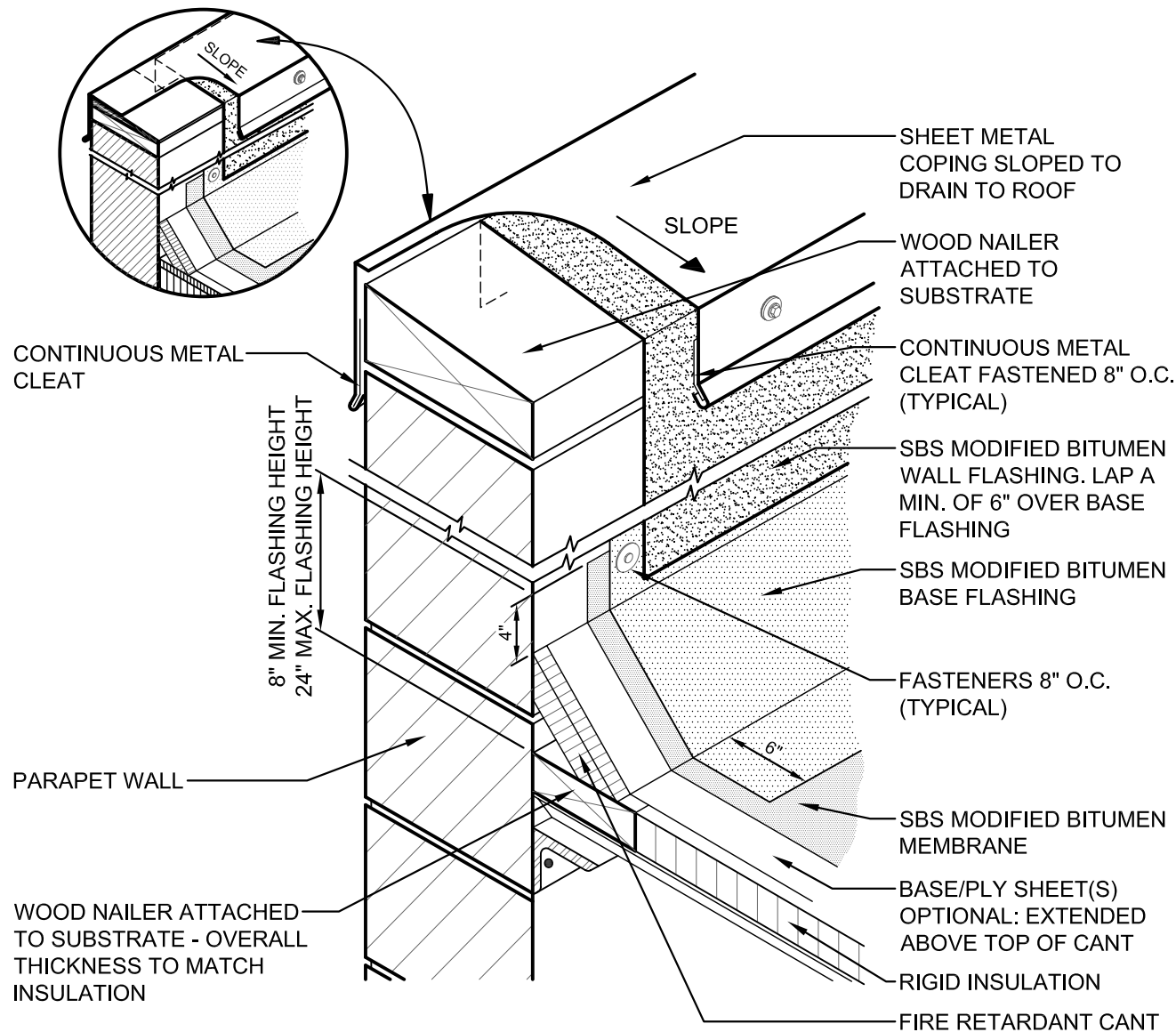


# NOTES:

1. MASONRY WALLS TO BE PRIMED AS REQUIRED PRIOR TO FLASHING. WOOD WALLS REQUIRE BASE SHEET NAILED TO WALL 8" O.C. ALONG TOP AND LAPS, ONE PER S.F. FIELD.
2. SBS MODIFIED BITUMEN WALL FLASHING TURNED OVER EDGE AND EXTENDED BELOW BLOCKING OR A MINIMUM OF 1 1/2" (38 MM), WHICHEVER IS GREATER.
3. CONTINUOUS WEATHERPROOF MEMBRANE ON TOP OF WALL TURNED DOWN BOTH SIDES. OPTIONAL IF BASE FLASHING IS TURNED OVER OUTSIDE FACE. REFER TO DETAIL INSET.
4. FASTENED SBS MODIFIED BITUMEN BASE FLASHING WITH FASTENERS APPROX. 8" O.C. REFER TO DETAIL INSET.
5. DURAFLEX ALUM MAY BE USED FOR FLASHING MATERIAL IN LIEU OF HEAT WELDED SBS FLASHING MEMBRANE.



This detail is furnished "as is" and "as available" and for information only and as a guide for use in conjunction with U.S. Ply products with applicable construction conditions. All dimensions shown are sheet specific; do not scale off of drawing. All details must be checked by the user's designer, architect or engineer to ensure that design is adequate for intended use. Any alterations made to this detail become the design of the user and shall neither be assumed nor construed as U.S. Ply's design. U.S. Ply will not be liable for damages of any kind arising from the use of this website, and/or details, including direct, indirect, incidental, consequential and punitive damages.



# U.S. PLY, INC.

*Pioneered with performance in mind... Engineered to stand the test of time.*

TITLE:

**SBS HIGH WALL FLASHING DETAIL**

DATE:  
**05-14-2004**

REVISIONS:  
**01-31-2011**

SCALE:  
**N.T.S.**

**DFTG-13**